




# MILFORD

. . . on the Move


JULY 2007

ACCE/NAMD Award for Excellence Finalist


## Mark Your Calendar

**July 20<sup>th</sup> - 7:00 PM**   
**Steve D'Agostino Band**  
Sponsored by Kapusta & Otzel  
Rotary Pavilion, behind library

**July 26<sup>th</sup> - 1:00 PM**  
**Ribbon Cutting**  
**Guardian Angels Home Care**  
232 Boston Post Road

**July 27<sup>th</sup> - 7:00 PM**   
**Atwood Express Band**  
Sponsored by Kapusta & Otzel  
Rotary Pavilion, behind library

**August 1<sup>st</sup> - 5:00 - 7:00 PM**  
**Ribbon Cutting**  
**Wal-Mart**  
1365 Boston Post Road

**August 3<sup>rd</sup> - 7:00 PM**   
**Milford Concert Band**  
Sponsored by Kapusta & Otzel  
Rotary Pavilion, behind library

**August 22<sup>nd</sup> - 5:00 - 7:00 PM**  
**Business After Hours**  
**Fitness Edge**  
125 Old Gate Lane

**August 9<sup>th</sup> - 4:00 PM**  
**Ribbon Cutting**  
**Café Atlantique**, 33 River St.

**August 21<sup>st</sup> - Noon**  
**Ribbon Cutting**  
**Cool Cuts for Kids**  
1089 Bridgeport Avenue

**August 24<sup>th</sup> - 7:00 PM**  
**U.S. Navy Show Band**  
Courtesy of The Milford Bank  
& Law Firm of Kapusta & Otzel  
Parsons Auditorium  
There is no charge for this concert however, tickets are required. Tickets will be available at the Chamber in August.



## CHAMBER MAKES A DIFFERENCE. WORK REMAINS.



*By Marshall R. Collins, Esq.*

Chamber of Commerce members played an important role in the legislative activity that concluded on June 6<sup>th</sup>. Although a Special Session has been called to adopt a two year budget, activity took place on several key issues that the Chamber identified and made priorities.

The Chamber has been committed to reducing increases in the high cost of doing business in Connecticut. Energy, health care, taxes and payroll costs are some of the major costs that were identified.

### Energy.

In an effort to control the increasing energy rates, the Legislature passed a comprehensive bill which generally improves planning, promotes conservation and efficiency, and begins steps to increase generating capacity. Although there is little in the bill that provides immediate rate relief, the bill should be effective in the long term. The Governor did use a line item veto to veto two provisions regarding conservation programs. They would have cost \$98 million and have violated the state's spending cap. It is likely that the programs will be funded when a budget is adopted.

### Health Care.

The major health care bill that passed expands eligibility for children and lower income individuals and families. Outreach and Medicaid provider reimbursement rates are also increased. The primary controversy over the bill lies in the fact that the Legislature and the Governor failed to reach agreement on a budget. There is no funding provided for the crucial Medicaid provider increases which are estimated to cost at least \$150 million. If providers continue to refuse to accept new Medicaid patients, increased eligibility and outreach expenditures will have been wasted and uncompensated

care costs will remain high. Furthermore, the bill does little to address cost drivers other than uncompensated care. Much remains to be done.

### Taxes and Spending.

Initial budget plans from the Governor, the majority Democrats and minority Republicans proposed unsustainable spending increases of between 6.2%-10.4%. Despite an estimated \$1 Billion surplus and another \$1 billion in the state's rainy day fund, the Governor and Democrats initially proposed major tax increases. At the conclusion of the regular Legislative Session there is no agreement on spending and taxes. Legislative leaders and the Governor must continue to hear from Chamber members about the need for a sustainable budget that will not result in future deficits and necessitate further tax increases.

### Payroll Costs.

A major effort was made by a coalition of labor unions and plaintiff's lawyers to repeal several key workers' compensation cost containment measures which received bipartisan support in 1993. Fortunately, hundreds of calls and emails to legislators by Chamber members defeated efforts to significantly increase the cap on discretionary workers' compensation benefit awards and repeal scarring awards reforms. Legislators heard that Connecticut cannot afford to increase workers' compensation costs by over 50%. Further efforts to mandate the provision of sick leave to full and part-time workers also failed to pass.

These are only a few of the issues that were addressed. Although the failure to adopt a budget is disappointing, steps were taken to respond to the Chamber's call for action on key cost of doing business issues. Chamber members were more active in these debates than they have been in many years. It makes a difference.

## The Beach Party Was A “Blast”

“Everyone had a blast,” said Tracy O’Brien. “The food and service were wonderful and the band provided us with great music to dance the night away. Villa Bianca and the committee did an outstanding job. It was a great night of networking and incredible fun.”



### Thanks to Our Sponsors

**Smith Craft Real Estate - Milford Harbor**  
**SUBWAY® - Simon Lake Submarine**

**BIC Corporation - Silver Sands**

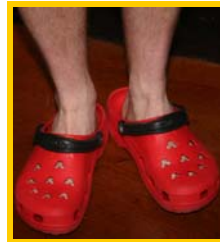
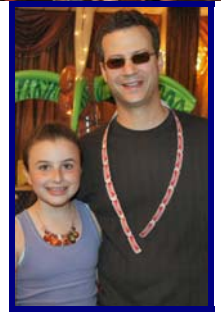
**GO Environmental - Fort Trumbull Beach**

**New England Alliance Mortgage - Bayview Beach**

**Schick - Gulf Beach**

**Tri-City Appliance/Heating & Cooling - Anchor Beach**

**Westcott & Mapes - Burwell Beach**



*Photos by Stuart Walls of Woodstock Studio*

**A very special thanks to our Captain's Ball Committee who worked hard to make this event so successful!**

### Milford Beach Party Committee

Chairperson, Tracy O'Brien, Marvin Display 1, LLC

Kathleen Alagno, Milford Chamber of Commerce

Robert Chesson, The Landlord Firm

Dennis Fendo, AFLAC

Bryan Gaus, Westfield Connecticut Post

Paula Kranyak, SUBWAY® World Headquarters .

Peter Murray, Schick

Peter Lee, BIC Corporation

Theresa Patrick, Patrick Family Chem-Dry

Phyllis Warakowski, New England Alliance Mortgage

## Summer Nights by Harbor Lights Concert Series 2007

**Sponsored by The Law Firm of Kapusta & Otzel**

July 20 Steve D'Agostino - Singin' & Swing Swingin' the Great American Standards

July 27 Atwood Express

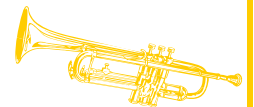
August 3 Milford Concert Band

*All above Concerts begin at 7:00 PM on Fridays in the Rotary Pavilion at Fowler Field (behind the Library).*

## U.S. Navy Show Band

**August 24<sup>th</sup> , 7:00 PM, Parsons Auditorium**

**The U.S. Navy Show Band will once again perform for us courtesy of:**



*There is no charge for this concert however, tickets are required.  
Tickets will be available at the Milford Chamber office in August.*

## Milford Chamber of Commerce Trust Awards

### \$32,500 IN SCHOLARSHIPS TO LOCAL YOUTH



The Milford Chamber of Commerce annually awards scholarships to students from the Milford area. The scholarships are funded through the Milford Chamber of Commerce Trust Fund and the BIC Golf Classic that is held annually. This year's tournament will take place on July 9, 2007 at Mill River Country Club. Local businesses participate in the tourney that is a full day event. The proceeds help fund the scholarship trust and the Student Mini Grant program.

This year's awards, sponsored by Westfield Connecticut Post, were presented on Friday, May 18, 2007 at the Milford Chamber's annual "State of the City Luncheon", with Mayor James Richetelli as keynote speaker at Aldario's Restaurant.

Also awarded was the Milford Pride's Annual "White Glove Award" that will be presented to Mike Zanarini who will represent the Devon of Milford Rotary Club. The Devon of Milford Rotary Club has been awarded the White Glove citation on behalf of the work that has been done on Liberty Rock Park.

#### Awards to Jonathan Law High School Students:

- Jessica Wilcock, \$2,000 - **The Frederick A. DeLuca/ Subway Scholarship**
- Christine Mele, \$500 - **Wilfred & Eileen Cartier Memorial Scholarship**
- Sara Mayko, \$500 - **Golden Hands Scholarship**
- Siri Sastry, \$500 - **C.A. McInnis and Associates Scholarship**
- Kimberly Gould, \$1,000 - **Marcel Bich Memorial Scholarship**

- Bryan Wilhelm, \$500 - **Advanced Placement Scholarship**
- Samantha Hathaway, \$500 - **Milford Chamber Tuesday Leads Group Scholarship**
- Shannon Jacobson, \$500 - **CS Brokers Scholarship**
- Cheray Pulley, \$500 - **Tutor Time Child Care/ Learning Centers**
- Elizabeth Ung, \$1,000 - **The J. Bruce Eagleson Memorial Scholarship**

#### Awards to Joseph Foran High School Students:

- Kayla Naposki, \$1,000 - **Kingdom Life Christian Church**
- Laura Hutcheon, \$500 - **Humanitarian Scholarship**
- Allison Reh, \$1,000 - **Napoli Indoor Auto Outlet/ Suzuki Scholarship**
- Jo-Marie Kasinak, \$1,000 - **The Berchem, Moses & Devlin Scholarship**
- Christopher Bacchiocchi, \$1,000 - **The Milford Chamber of Commerce Trust**
- Alison Cooper, \$1,000 - **Mark Cooper Memorial Scholarship**
- Eric Theriault, \$500 - **R. J. Reuter Business Success Scholarship**
- Michelle Richetelli, \$500 - **R. J. Reuter Business Success Scholarship**
- Angeli Mohanani, \$2,500 - **The Daniel T. Meisenheimer Jr. Memorial Scholarship**
- Caitlin Mazzola, \$1,000 - **Napoli Nissan Scholarship**
- Kimberly Hunnicutt - \$500 **Milford Living Magazine Scholarship**

- Peter Costello, \$750 - **Schick Scholarship**
- Caitlyn Miller, \$1,000 - **The Milford Consortium for Child Care Initiatives**

#### Awards to Lauralton Hall Students:

- Makayla Silva, \$2,500 - **The Edmund Meinket Memorial Scholarship**
- Amanda Warrek, \$500 - **Creative Health & Fitness Scholarship**
- Kim Nahee, \$1,000 - **Irving & Naomi Spector Memorial Scholarship**

#### Awards to Platt Technical High School Students:

- Amaris Pressley, \$500 - **Milford Lions Club Scholarship**
  - Christopher Fernandez, \$500 - **Golden Hands Scholarship**
  - Benjamin Beattie-Chapnick, \$1,000 - **New Standard Institute Scholarship**
  - Ashley Taylor, \$1,000 - **The Stonebridge Restaurant Scholarship**
  - Christopher Hernandez, \$1,000 - **The University of New Haven Scholarship**
  - Peter Costello, \$750 - **Schick Scholarship**
  - Kyrle Luth, \$3,000 - **Tri-City Appliance/Heating & Cooling Scholarship**
- #### Awards to North Haven High School Student:
- Jamie Piekarski, \$1,000 - **The Peter J. Nagle Financial Management Scholarship**



**WELCOME NEW MEMBERS** (As of April 11<sup>th</sup>)**Active Health & Wellness Center**

255 Cherry Street, Suite A, Milford  
283-5404 / [www.activehealthLLC.com](http://www.activehealthLLC.com)  
*Chiropractors*

**Alarcon Tire**

70 Bridgeport Avenue, Milford  
878-5731

*Tire Dealers/Auto Repairs*

**Allen Ad Factory**

3 Lawrence Avenue, Milford  
306-7946 / [www.allenadfactory.com](http://www.allenadfactory.com)  
*Advertising Agencies/Public Relations*

**America's Alternative Senior Care**

124 Milford Point Rd., Milford, 283-5136  
*Nursing Care/Home Care*

**American Cancer Society**

538 Preston Ave., Meriden 06450  
203-379-4700  
*Non-Profit*

**Aria Diamonds**

531 Boston Post Rd., Orange, 06477  
891-0949 / [www.ariadiamonds.com](http://www.ariadiamonds.com)  
*Jewelers*

**Artisan & Craftsman**

P.O. Box 305, Milford, 278-1727  
*Painting-Decorative & Faux Wall Finish*

**AuctionGuyz.net**

227 Naugatuck Avenue, Milford  
687-4085 / [www.auctionguyz.net](http://www.auctionguyz.net)  
*Consignment Shops*

**Certi Restore of Southern CT**

20 Quirk Road, Milford  
877-5544 / [www.certirestore.com](http://www.certirestore.com)  
*Furniture Repair & Restoration*

**The College Navigator, LLC**

61 Cherry St., Unit 2A, Milford, 283-5388  
*Educational Consulting*

**Commercial Property Consulting**

57 Island Avenue, Madison, 06443  
245-8181 / [www.cpcconsultant.com/mc5](http://www.cpcconsultant.com/mc5)  
*Real Estate/Tax and Cost Analysis*

**Connecticut Chiropractic Specialists**

397 Bridgeport Ave., Milford, 877-0112  
*Chiropractors*

**Cool Cuts for Kids**

1089 Bridgeport Ave., Milford, 283-4729  
*Beauty Salons*

**Corp-Décor**

20 Pequot Street, Milford, 877-5009  
*Office Furniture, Commercial Floor Covering, Design Services*

**Corporate Furnishings, LLC**

124 Cedarhurst Lane, Milford  
640-7760 / [www.cfd-llc.com](http://www.cfd-llc.com)  
*Office Furniture, Commercial Floor Covering, Design Services*

**Cort Furniture Rental**

50 Berlin Road, Cromwell, 06416  
860-613-0415 / [www.cort.com](http://www.cort.com)  
*Furniture/Rentals*

**Culhane Protective Systems, Inc.**

P.O. Box 2981, Westville 06515-0081  
387-1647  
*Security Systems, Fire & Burglar Alarms*

**Devon Duckpin Bowling**

551 Naugatuck Ave., Milford, 882-1867  
[www.devonduckpinbowling.com](http://www.devonduckpinbowling.com)  
*Bowling*

**Diamond Designs**

500 Boston Post Road, Orange  
799-7999 / [www.dia-designs.com](http://www.dia-designs.com)  
*Jewelers*

**DigiComm Document Solutions**

2 Enterprise Dr., Suite 303, Shelton  
800-638-3420  
*Office/Equipment, Supplies, Furniture*

**Diversified Employment Services, Inc.**

1463 Whalley Ave., New Haven 06515  
397-2500  
[www.diversifiedemployment.com](http://www.diversifiedemployment.com)  
*Employment Agencies*

**Donna Marie's - A Massage**

**Wellness Spa**  
754-756 Boston Post Road, Milford  
874-7793 / [www.donnamariesspa.com](http://www.donnamariesspa.com)  
*Massage - Facials, Skin Care & Therapeutic Massage*

**Duct Diagnostics, LLC**

195 Elizabeth Street, Derby  
734-1532 / [www.ductdiagnostics.com](http://www.ductdiagnostics.com)  
*Air Duct Cleaning*

**EBC SECURITY LLC**

242 Kings Highway Cutoff, Fairfield  
368-0800  
*Security Systems, Fire & Burglar Alarms*

**Edward Jones Investments**

50 Broad Street, Milford  
874-1262 / [www.edwardjones.com](http://www.edwardjones.com)  
*Financial Advisors*

**Elite Financial Services, LLC**

25 Crescent Street, Stamford 06906  
203-353-8601 / [www.efsonline.net](http://www.efsonline.net)  
*Mortgage Loans*

**D.C. Foster Appraisal Services**

266 Housatonic Drive, Milford, 882-0004  
*Real Estate/Appraisal*

**The Get In Touch Foundation**

P.O. Box 2144, Milford, 283-5127  
[www.getintouchfoundation.com](http://www.getintouchfoundation.com)  
*Non-Profit*

**Goldwyn Associates**

46 Elder Street, Milford, 209-8098  
*Public Relations & Marketing Services*

**Good Things, LLC**

40 Avalon Drive, Suite 6332, Milford  
988-4706 / [www.goodthingsllc.com](http://www.goodthingsllc.com)  
*Advertising Specialties/Marketing & Promotion*

**Guardian Angels Home Care, LLC**

232 Boston Post Rd., Milford, 878-2525  
*Nursing Care/Home Care*

**The Hair Loft**

1501 Boston Post Rd., 2nd Floor, Milford  
301-9981  
*Beauty Salons*

**Heartland Payment Systems**

33 Wake Robin Ln., Shelton, 856-1840  
[www.heartlandpaymentsystems.com](http://www.heartlandpaymentsystems.com)  
*Credit Cards & Plans-Equipment*

**Heartland Payment Systems**

106 Comstock Hill Ave., Norwalk  
203-840-1200  
[www.heartlandpaymentsystems.com](http://www.heartlandpaymentsystems.com)  
*Credit Cards & Plans-Equipment*

**Hodson Realty, Inc.**

6515 Main Street, Trumbull  
268-7743 / [www.hodsonrealty.com](http://www.hodsonrealty.com)  
*Real Estate/Appraisal*

**Hometown Baskets**

494 Anderson Ave., Milford, 882-0732  
*Gift Baskets*

**Hyatt Place**

190 Old Gate Lane, Milford  
888-492-8847 / [www.hyattplace.com](http://www.hyattplace.com)  
*Hotels/Motels*

**JunkLuggers**

2490 Blackrock Turnpike, #287, Fairfield  
888-LUG-JUNK/ [www.junkluggers.com](http://www.junkluggers.com)  
*Hauling*

**Madd Beaver Tree Experts & Stump Grinding Specialists**

2 West St., Woodbridge, 305-2584  
*Tree Service, Spraying Horticulture*

**Melt Gelato & Crepe Café**

1201 Boston Post Road, #9252, Milford  
783-1713 / [www.meltgelato.com](http://www.meltgelato.com)  
*Restaurants*

**MK's Home Canine Care**

P.O. Box 3508, Milford, 874-0347  
*Pet Sitting Service-Dog Walking*

**The Mortgage Store of CT & Trovini Commercial Mortgage**

89 Boston Post Road, Milford  
800-978-1945 / [www.getelvio.com](http://www.getelvio.com)  
*Mortgage Loans*

**One Communications**

1344 Silas Deane Highway, Suite 510  
Rocky Hill / 860-882-6777  
[www.onecommunications.com](http://www.onecommunications.com)  
*Telecommunications*

**WELCOME NEW MEMBERS** (cont.)

**The Pantuso Law Firm, LLC**  
 204 Broad Street, 2nd Floor, Milford  
 876-0000 / www.pantusolaw.com  
*Attorneys*

**Plan B Financial Resolutions Services**  
 218 Harold Avenue, Milford  
 877-5124 / www.seeplanb.com  
*Financial Services*

**Precision Muscle Therapy**  
 1621 New Haven Avenue, Milford  
 882-0001  
*Massage/Pain Management*

**Jay Rowe Music**  
 46 Point Beach Drive, Milford  
 874-4150 / www.jayrowemusic.com  
*Entertainment/Special Events/Recreation*

**Sales & Service Learning Center at Westfield CT Post**  
 1201 Boston Post Road, Milford  
 860-527-1044 / www.crmaonline.com  
*Employment & Training*

**Screenvision Direct**  
 175 N. Main Street, Branford  
 868-7364  
*Advertising-Cinema Advertising*

**Seacoast Embroidery**  
 211 Plains Road, Milford, 410-1487  
 www.seacoastembroidery.com  
*Embroidery*

**Shell Systems, LLC**  
 122 Shell Avenue, Milford  
 876-7511 / www.shellllc.com  
*Computer Services/Network Solutions*

**Shoff Darby Companies, Inc.**  
 401 Merritt 7, Plaza Level, Norwalk  
 203-354-6243 / www.shoffdarby.com  
*Insurance*

**T.H.E. Construction Co.**  
 P.O. Box 5361,  
 996-9477 / www.theconstructco.com  
*Contractors*

**Tanglez Hair Design**  
 125 Gulf Street, Milford  
 878-3331  
*Beauty Salons*

**Technical Concepts**  
 284B Quarry Road, Milford  
 877-9096  
 www.technicalconcepts-ct.com  
*Video & Multi-Media Production & Services*

**V-Three, LLC**  
 99 Merwin Avenue, Milford  
 876-7157 / www.v-three.net  
*Business Development*

**The Villa Gourmet, LLC**  
 9 River Street, Milford  
 878-8646 / www.thevillagourmet.com  
*Gourmet Shops*

**Walnut Beach Creamery**  
 17-19 Broadway, Milford  
 876-2737  
*Ice Cream Shop*

**WHITECAP Technologies, Inc.**  
 P.O. Box 7289, Prospect  
 203-758-6234/ www.whitecaptech.com.  
*Voice & Data Communications*

**WPI - Elite Realty Group, LLC**  
 394 New Haven Avenue, #5, Milford  
 874-5543 / www.wpimilford.com  
*Real Estate/Residential & New Homes*



**MEMBER NEWS**

**New Standard Institute** received Plant Engineering's Product of the Year Award in recognition of their Web Based Training Program. **Michael Brown, Michael Konopka; New Standard Institute** and **Joe Mirmina**; a student at University of Connecticut accepted the award in Chicago at Plant Engineering's Manufacturing Summit. Congratulations!

**The Connecticut Post** received two awards from the New England Newspaper Association. Post reporter **Bill Cummings** earned top honors for his investigative reporting of Bridgeport's Democratic Town Committee. The Post was also named one of 20 "**Distinguished Newspapers**" across New England.

**The Women's Business Development Center** celebrated 10 years in business in May.

**Kerri Rowland** of **New Standard Institute** was named one of **New Haven Business Times** "Twenty Noteworthy Women" for her various contributions to the community. Rowland serves as a liaison to the Public Works Committee, Parks, Beach and Recreation Commission, and Flood and Erosion Board.

Congratulations to **Sam Bergami, Jr. of Alinabal; Stephen & Sally Glick of Chambers Insurance Trust; Meredith Reuben of Eastern Bag and Paper.** They were all honored by Junior Achievement at their annual "Business Hall of Fame."

Congratulations to **The Canvas Patch** celebrating their 30<sup>th</sup> Anniversary on July 7<sup>th</sup>.

**Spectrum Associates** is celebrating 50 years in flight. Established in 1957 as a new product design and development

company, to its current status as prominent CAD/CAM engineering-oriented quality manufacturer.

**Rita's Water Ice** of West Haven will be selling \$1 paper lemons from June 30<sup>th</sup> through July 31<sup>st</sup> for charity to raise money for childhood cancer research. They are partnering with Alex's Lemonade Stand Foundation which has raised over \$11 million for pediatric cancer research.

**Do you have news to share?**

Submit your business announcements to Member News by emailing lworobel@milfordct.com

**DISASTER ASSISTANCE**

If you sustained losses or damage during the rains and flooding between April 15 and April 27, you may be eligible for disaster aid. There are low interest business loans as well as residential grants and loans available. The deadline to file is **August 10th**. For more information call 1-800-621-FEMA (3362).

## SCRAPBOOK OF RECENT CHAMBER EVENTS



*Health & Wellness Business After Hours at Milford Hospital*



*Business After Hours at the Beach House Restaurant  
Photo by S.M. Cooper*



*The Blue Turtle hosted Business After Hours in March  
Photo by S.M. Cooper*



*Jamie Boss, Technical Concepts presented at Good Morning Milford in April.*



*Milford Yacht Club hosted Business After Hours in April  
Photo by S.M. Cooper*

### A Special Thanks to our Hosts, Sponsors & Presenters!



*A St. Patrick's Business After Hours was held at RE/MAX Right Choice & Sensitive Care.  
Photo by S.M. Cooper*



*Good Morning Milford was hosted by Attorney David Feldman in May.*



*Lilith's Loom celebrated their Grand Opening in April.*



*Hyatt Place opened with a ribbon cutting ceremony in May.  
Photo by S.M. Cooper*



*In June, Peter J. Nagle Financial Management celebrated their Grand Opening .*



*Certi Restore of Southern CT celebrated their Grand Opening in June.*

### **Milford Money Gift Certificates - the perfect Summer Treat**

Milford Money is a great way to recognize an accomplishment, provide an incentive or to just say thanks!

**Give "Milford Money" Gift Certificates.**

**Milford Money is redeemable at over 100 participating member businesses in the Milford area.**

"Milford Money" gift certificates are available in \$5, \$10 and \$25 denominations and may be purchased at:

- Milford Chamber of Commerce - 878-0681
- The Milford Bank (all 4 branches) - 783-5700

Milford Chamber of Commerce • 5 Broad Street, Milford, CT 06460 / Phone: 878-0681 • Fax: 876-8517 • [www.milfordct.com](http://www.milfordct.com)

